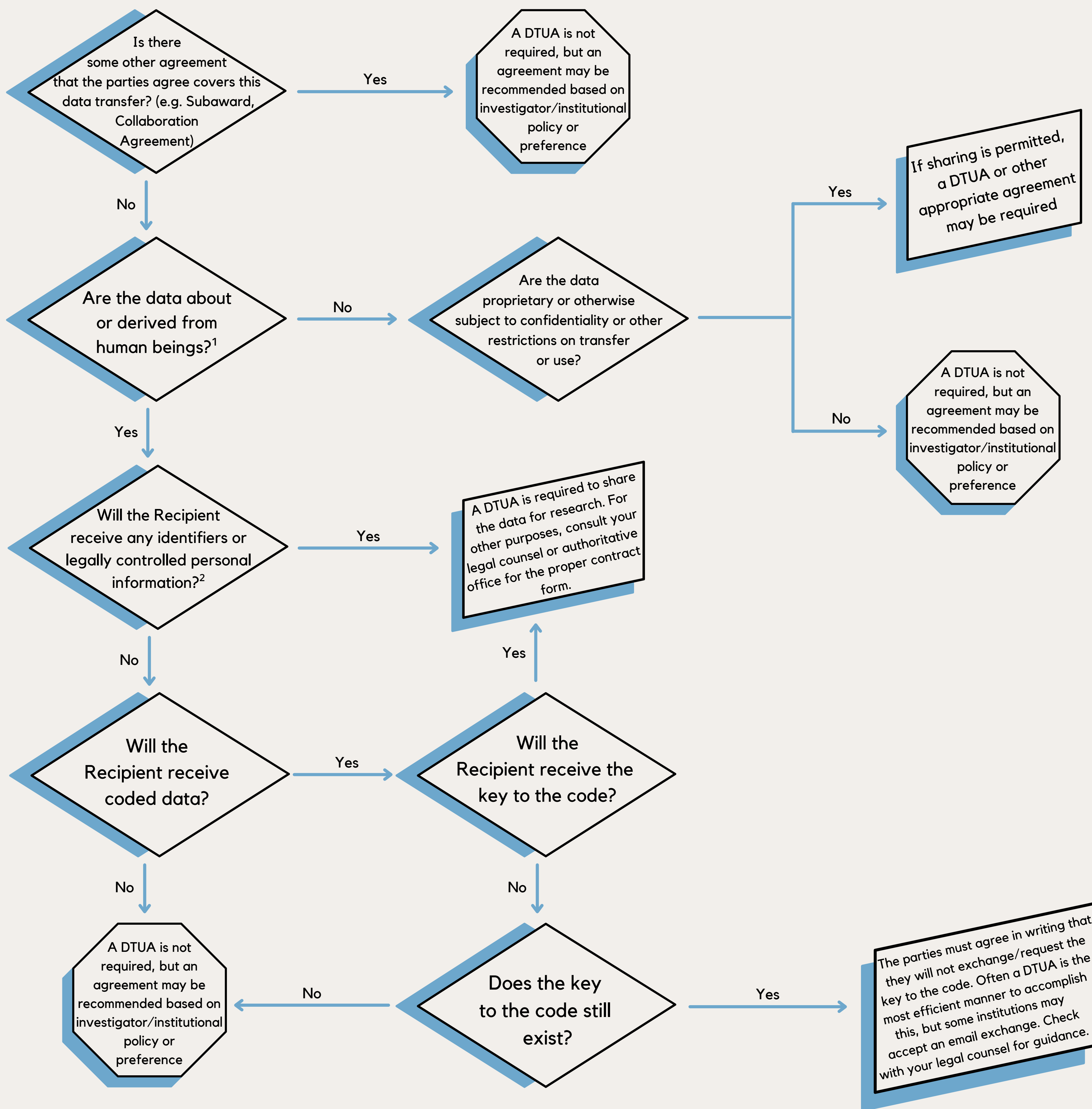


Outgoing Data: Is a DTUA Required or Recommended for Research Purposes?



*1 - Examples of data about or derived from human beings, include but are not limited to:

- Genomic and genetic information
- Clinical information
- Image information
- Survey data
- Audio/video recordings
- Transcripts
- Collected from mobile devices/technology

*2 - Examples of legally controlled personal information, include but are not limited to:

- HIPAA
- Common Rule
- FERPA
- U.S. Privacy Laws
- Consult applicable state and local laws