



FEDERAL DEMONSTRATION PARTNERSHIP
Redefining the Government & University Research Partnership

FDP Faculty Committee Update

Sandra Schneider, Chair, University of South Florida

Michele Masucci, Co-Chair, Temple University

January 9, 2017



Quick Overview

- Emphasis on broad integration of faculty into FDP efforts
- Faculty Steering Group and Faculty Liaisons
- Initiatives and Working Groups
 - ERI (Emerging Research Institution) Faculty
 - Research Pipeline
 - Faculty Engagement
 - Faculty Workload Survey



Faculty Integration

- Compliance
 - IRB/Human Subjects (e.g., Exempt Wizard)
 - IACUC/Animal Care and Use
 - Laboratory Safety
 - Data Stewardship
- Finance/Costing/Audit (e.g., National Dialogue/DATA)
- eRA (e.g., NSF Proposal Submission Modernization)
- Communications (e.g., outreach, website update)
- Membership (e.g., meeting attendance/planning)
- *Faculty*
 - *Luncheon Forum – not just faculty – please join us*



Faculty Liaisons and Steering Group

- **Monthly Calls**
 - stay updated
 - plan activities and meeting sessions
 - make progress on ongoing activities
- **Faculty Liaisons to Committees/Subcommittees**
 - Executive Committee (Sandy Schneider/Michele Masucci)
 - Membership (Larry Sutter, Co-Chair/Kelly Shaver [ERI])
 - Communications (Laura McCabe/George Uetz)
 - Finance (David Robinson)
 - IRB/Human Subjects (Jane McCutcheon/Robert Nobles)
 - IACUC/Animal Care/Use (Ara Tahmassian/Mary Ann Ottinger)
 - Laboratory Safety (Alice Young/Robert Nobles)
 - eRA (Jerry Cohen/John Hildebrand/David Robinson)
 - Research Administration (??)
 - Finance/Costing/Audit (??)
- **Workgroup Leaders**



ERI Faculty Working Group

- Group Lead: Kelly Shaver, College of Charleston
- Purpose: To bring attention to and address issues of primary concern to researchers at Emerging Research Institutions (ERIs)



ERI Faculty Working Group

Current Emphases

- Identifying and Engaging Faculty from ERI institutions
 - Obstacle: Making it possible for ERI Faculty to attend meetings
- Encouraging ERI Faculty Participation in Grant Review
 - Obstacle: Finding proactive ways to connect ERI Faculty with relevant programs and review panels
 - Proposal: Develop resource to guide ERI faculty to relevant resources and web pages of different funding agencies
 - Proposal: Work with NSF/NIH/others to develop webinars to provide guidance to those who are unfamiliar with the process



Research Pipeline Working Group

- Group Lead: Michele Masucci, Temple University
- Purpose: Focusing on Work-Life Balance as pertains to faculty burden



Research Pipeline Working Group

Who We are:

The pipeline group of FDP is concerned with:

- (a) Examining burden associated with broadening participation in science, technology, engineering, and math (STEM) fields of study programs through the study, reporting and implementing demonstrations
- (b) Examining burden issues that impact on individuals or groups of individuals who are in the student to professional pipeline in STEM through study, reporting and implementing demonstrations



Research Pipeline Working Group

Two ongoing activities of the group

1) Development of a report based on the survey of best practices at FDP institutions with respect to work-life balance policies.

Activities include:

- Working with Federal partners to define the project
- Gathering information about work life balance from multiple sources, including: faculty committee member home universities, review of national inventories, examination of literature
- Consolidation of practices in report form to serve as a resource tool for FDP member institutions



Research Pipeline Working Group

Activities (continued)

2) Pursue demonstration project related to a focus on burden to faculty connected with administering STEM pipeline funding programs.

Project concepts proposed have included:

- Developing better reporting tools to facilitate STEM Faculty PI reporting
- Comparing NIH and NSF program models to develop shared reporting and tracking tools
- Comparing dissemination methods to reduce Science PI burden
- Demonstrating partnership models with ERIs to facilitate involvement in STEM Pipeline programs



Faculty Engagement Working Group

- Group Lead: Laura McCabe, Michigan State Univ.
- Purpose: To support FDP Faculty



Faculty Engagement Working Group



- 1) Identify ways to support FDP Faculty**
- 2) Provide Faculty Resources**
- 3) Build bridges**



Faculty Engagement Working Group

Group Highlights



1) Identify ways to support FDP Faculty

FDP Faculty Survey

- How do faculty share FDP information?
- How does FDP benefit faculty members?
- What do faculty want to obtain from FDP?

Working Group Meetings

2) Provide Faculty Resources

Website Resources and Development

- Develop and post: best practices, meeting information, slides, videos to address faculty needs
- Organize website for easier access

FDP Faculty Guide for Navigating Meetings

- Pre, during and post-meeting best practices



Faculty Engagement Working Group

Highlights of the group

3) Building Bridges

Faculty - Faculty

- Communication/activities
- Sharing best practices

Faculty – Federal Agencies

- Communication

Faculty – Administrators

- Communication
- Building Research Enterprise
- Building bridges with Federal Agencies
- Mark Haselkorn (UW) and Larry Sutter (MTU) are developing on upcoming session!!





Faculty Workload Survey Working Group

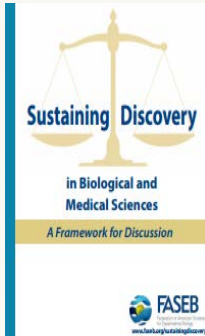
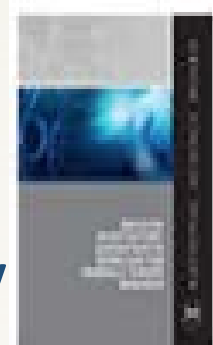
- Group Lead: Sandy Schneider, Univ. South Florida
- Purpose: To target empirically-documented priorities for reducing administrative burden on federally funded projects
 - To bring attention to the findings of FWS2
 - To develop FWS3



Faculty Workload Survey Working Group

Impact of findings from FWS2: Results cited in

- 2014 National Science Board Report: *Reducing Investigators' Administrative Workload For Federally Funded Research*
- H.R. 5056 - Research and Development Efficiency Act introduced July 2014 introduced by Rep. Larry Bucshon (R-IN)
- H.R. 6 - 21st Century Cures Act introduced May 2015 by Rep. Fred Upton (R-MI); includes SEC. 1023. Reducing Administrative Burdens of Researchers → **Signed into law in December, 2016.**
- 2015 FASEB Report: *Sustaining Discovery in Biological and Medical Sciences: A Framework for Discussion*
- 2016 National Academies Report: *Optimizing the Nation's Investment in Academic Research: A New Regulatory Framework for the 21st Century*
- 2016 GAO Report: *Federal Research Grants - Opportunities Remain for Agencies to Streamline Administrative Requirements*





Faculty Workload Survey Working Group

- **Development of FWS3**

- **Projected launch in February, 2018**
- **Same basic format**
- **Proposed changes**
 - More on proposal preparation and impact on active research
 - Attempt to align measures of % research time taken & hours
 - Focus on priorities for change (vs. time away from research)
 - Ratings of specific suggestions, including for institutions
- Input on survey content continues this meeting and through conference calls; goal to be finalized by May